

Crestron System Help Guide

This is a general help guide for all classrooms with this style touch panel. While the steps and location of buttons are the same regardless of which style room you are in, there may be slight variations in font, color, options, and icons, dependent on the slight differences in hardware.

For specific details about your classroom, please contact Classroom Technology Support.

Power on and connect

Step 1: Power on and/or connect your device.

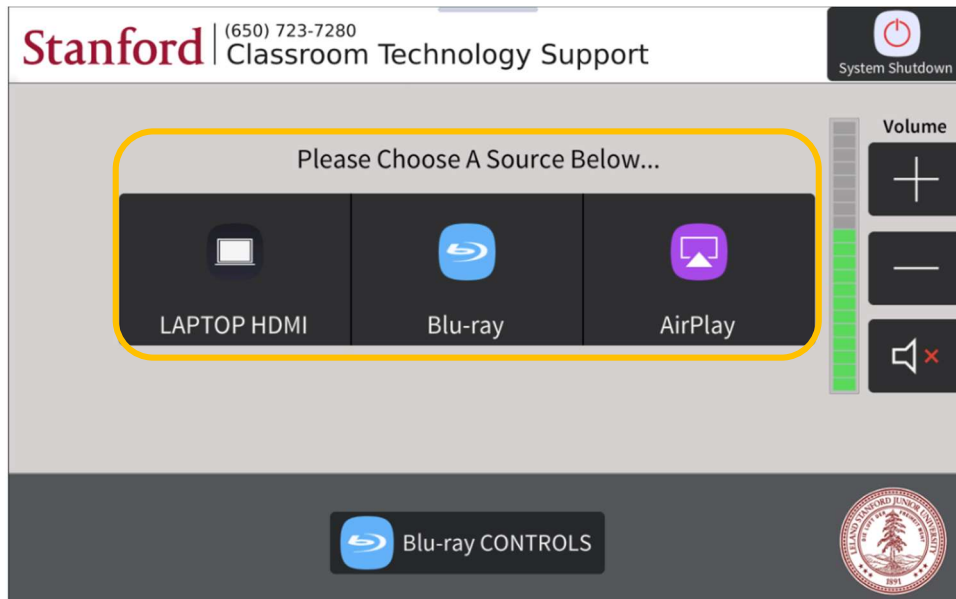
Option A. Plug your device in using the necessary cables and/or adapters.

- locate the input plate on the shelf of the lectern. Each room has one attached HDMI cable with a tethered adapter that supports USB-C connections.



Option B. If using wireless presentation (Apple TV) please contact Classroom Technology Support for further instructions.

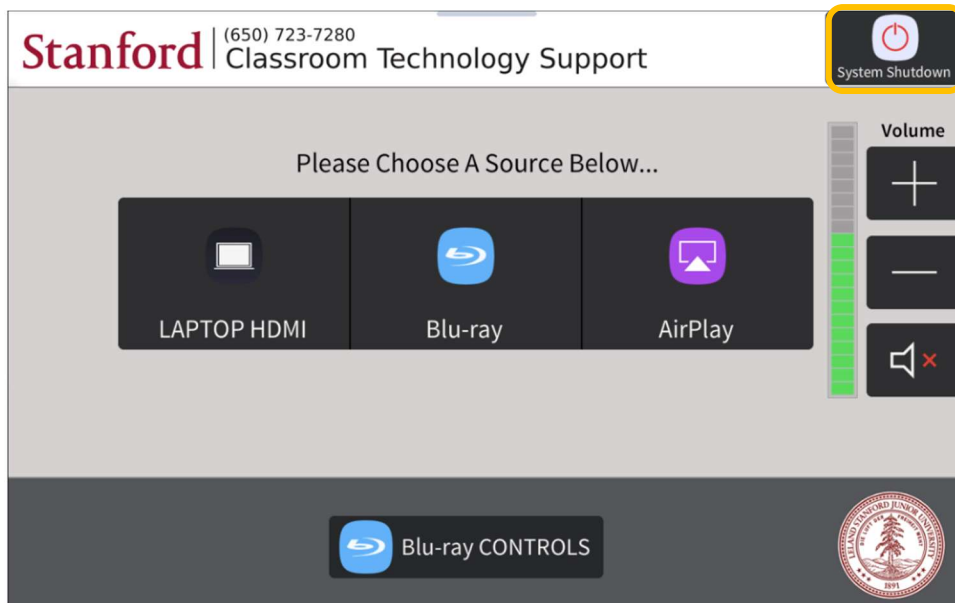
Step 2: Locate the touch panel and choose a source to turn on the system



**Note* - some rooms may have more or less choices depending on the room configuration.*

Step 2a: After you make your selection, the selected source will be highlighted blue.

Step 3: To power off the system, select “System Shutdown” in the top right-hand corner.

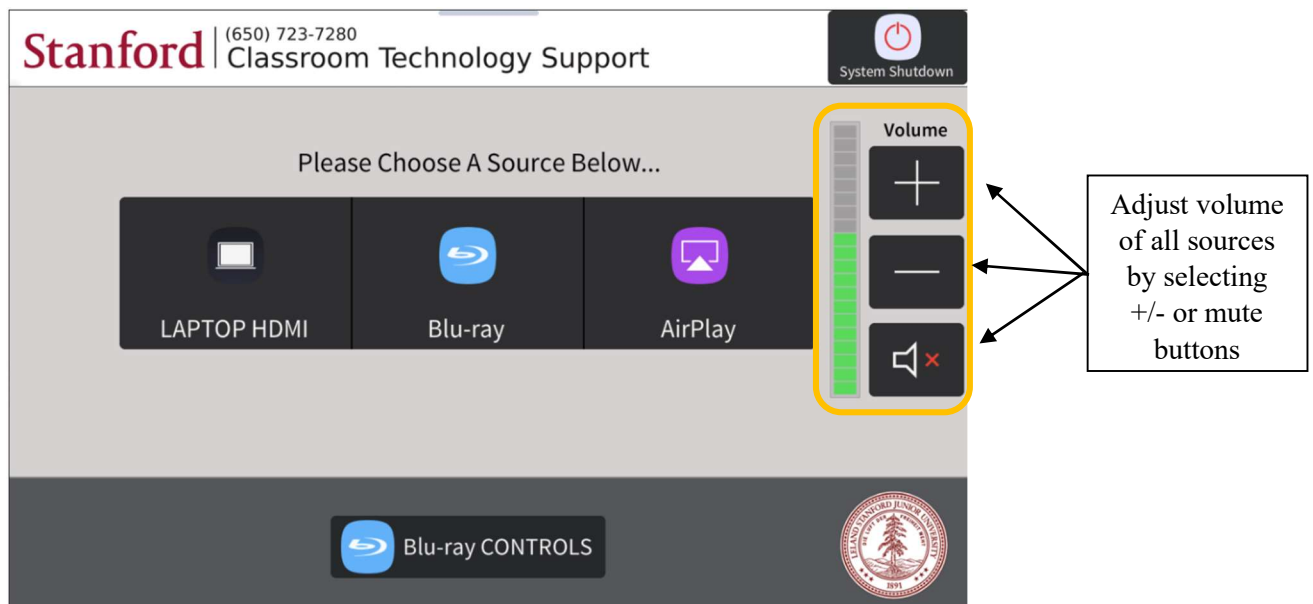


Step 3a: Confirm to power off when prompted

Optional steps to navigate system controls:

Audio Controls

- Select the 'Audio' button on the bottom of the screen.



**Note* - some rooms may have more or less choices depending on the room configuration.*